

Value of Peers Infographics



Peer Support



Peer Recovery



Parent Support



General Peer Support

**THE
VALUE OF PEERS
FOR SUPPORTING
RECOVERY FROM
SUBSTANCE USE**

“Peer support helped me see that I was not hopeless. It gave me my voice back and bolstered my self-worth.”

—Michelle

What are Peer Recovery Support Services?

Peer recovery support services,¹ delivered by *peer recovery coaches*, are one form of peer support. They involve the process of giving and receiving non-clinical assistance to support long-term recovery from substance use disorders. A peer recovery coach brings the lived experience of recovery, combined with training and supervision, to assist others in initiating and maintaining recovery, helping to enhance the quality of personal and family life in long-term recovery (White, 2009). Peer recovery support services can support or be an alternative to clinical treatment for substance use disorders.

1

Peer recovery support services, peer-delivered recovery support, and peer-based recovery support are used interchangeably.





What are Peer Recovery Support Services? cont.

Peer-based recovery supports are part of an emerging transformation of systems and services addressing substance use disorders. They are essential ingredients in developing a recovery-oriented system in which clinical treatment plays an important, but singular, role. Acute care substance use treatment without other recovery supports has often not been sufficient in helping individuals to maintain long-term recovery. Substance use disorders are currently understood to be chronic conditions that require long-term management, like diabetes. Peer-based recovery support provides a range of person-centered and strength-based supports for long-term recovery management. These supports help people in recovery build *recovery capital*—the internal and external resources necessary to begin and maintain recovery (Best & Laudet, 2010; Cloud & Granfield, 2008).

What Do Peer Recovery Coaches Do?

Peer recovery coaches walk side by side with individuals seeking recovery from substance use disorders. They help people to create their own recovery plans, and develop their own recovery pathways.

Recovery coaches provide many different types of support, including

-  emotional (empathy and concern)
-  informational (connections to information and referrals to community resources that support health and wellness)
-  instrumental (concrete supports such as housing or employment)
-  affiliational support (connections to recovery community supports, activities, and events)

What Do Peer Recovery Coaches Do? cont.

Recovery plans and other supports are customized, and build on each individual's strengths, needs, and recovery goals.

Peer recovery support focuses on long-term recovery and is rooted in a culture of hope, health, and wellness. The focus of long-term peer recovery support goes beyond the reduction or elimination of symptoms to encompass self-actualization, community and civic engagement, and overall wellness.

The unique relationship between the peer recovery coach and the individual in or seeking recovery is grounded in trust, and focused on providing the individual with tools, resources, and support to achieve long-term recovery.

Peer recovery coaches work in a range of settings, including recovery community centers, recovery residences, drug courts and other criminal justice settings, hospital emergency departments, child welfare agencies, homeless shelters, and behavioral health and primary care settings. In addition to providing the range of support encompassed in the peer recovery coach role, they take an active role in outreach and engagement within these settings.

***“When I needed someone to walk
beside me, peer support was there.”***

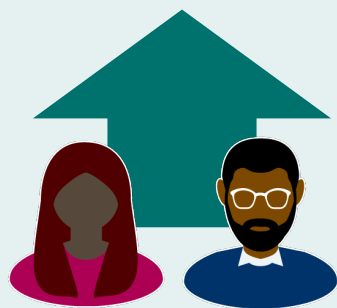
—Steve

Is Peer Recovery Coaching Effective?

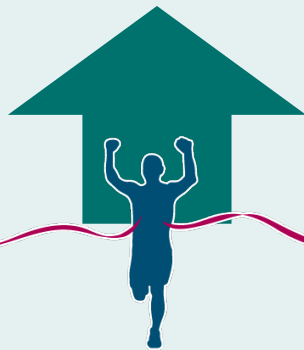
People who have worked with peer recovery coaches provide strong testimonies of the positive impacts of peer recovery support on their own recovery journeys. The research supports these experiences. While the body of research is still growing, there is mounting evidence that people receiving peer recovery coaching show reductions in substance use, improvements on a range of recovery outcomes, or both. Two rigorous systematic reviews examined the body of published research on the effectiveness of peer-delivered recovery supports published between 1995 and 2014. Both concluded that there is a positive impact on participants (Bassuk, Hanson, Greene, Richard, & Laudet, 2016; Reif et al., 2014).

Is Peer Recovery Coaching Effective? cont.

Emerging research indicates that peer recovery coaching holds promise for supporting recovery from substance use disorders. Taken as a whole, the current body of research suggests that people receiving peer recovery support may experience:



Improved relationship with treatment providers



Increased treatment retention



Increased satisfaction with the overall treatment experience



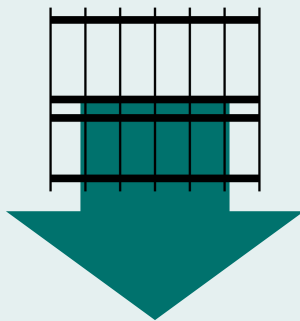
Improved access to social supports



Greater housing stability

Is Peer Recovery Coaching Effective? cont.

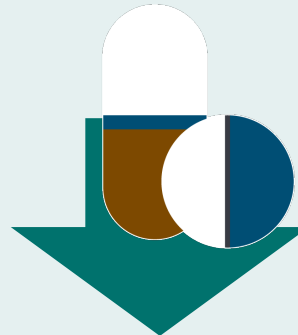
Emerging research indicates that peer recovery coaching holds promise for supporting recovery from substance use disorders. Taken as a whole, the current body of research suggests that people receiving peer recovery support may experience:



Decreased criminal justice involvement



Decreased emergency service utilization



Reduced relapse rates



Reduced re-hospitalization rates



Reduced substance use

REFERENCES

- Bassuk, E. L., Hanson, J., Greene, R. N., Richard, M., & Laudet, A. (2016). Peer-delivered recovery support services for addictions in the United States: A systematic review. *Journal of Substance Abuse Treatment, 63*, 1–9. doi: 10.1016/j.jsat.2016.01.003
- Best, D., & Laudet, A. (2010). *The potential of recovery capital*. London: RSA Projects. Retrieved from <https://www.thersa.org/discover/publications-and-articles/reports/the-potential-of-recovery-capital>
- Center for Substance Abuse Treatment. (2009). *What are peer recovery support services?* HHS Publication No. (SMA) 09-4454. Rockville, MD: Substance Abuse and Mental Health Services Administration, U.S. Department of Health and Human Services.
- Cloud, W., & Granfield, R. (2008). Conceptualizing recovery capital: Expansion of a theoretical construct. *Substance Use & Misuse, 43*(12–13), 1971–1986. doi: 10.1080/10826080802289762
- Reif, S., Braude, L., Lyman, D. R., Dougherty, R. H., Daniels, A. S., Ghose, S. S., ... Delphin-Rittmon, M. E. (2014). Peer recovery support for individuals with substance use disorders: Assessing the evidence. *Psychiatric Services, 65*(7), 853–861. doi: 10.1176/appi.ps.201400047
- White, W. (2009). *Peer-based addiction recovery support: History, theory, practice, and scientific evaluation*. Chicago, IL: Great Lakes Addiction Technology Transfer Center and Philadelphia Department of Behavioral Health and Mental Retardation Services.